

# Project ReACH

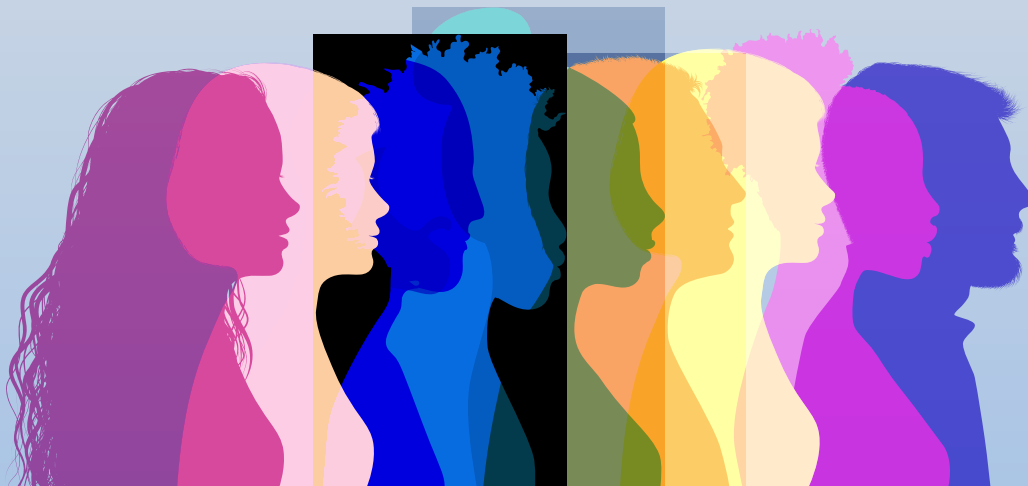
a research study for people with HIV who drink alcohol

Investigators from Brown University are studying different approaches to help people with HIV manage their use of alcohol in a healthy way. The study is funded by the National Institutes on Health.

Participants will complete an initial survey online, which will last 45 minutes and additional interviews 6, 12, 18, and 24 months later. Half of participants will receive brief counseling only and half will be offered more extended counseling and use of a text messaging program focused on managing drinking. You do not have to be interested in changing your drinking to participate!

Participants will be compensated up to \$230 for completing all study procedures. To learn more about this voluntary research study and find out if you might be eligible, call **Ayla** at Brown University at **(401) 863-6858**.

You can also go online to see if you might be eligible by completing a brief survey at: **[sites.brown.edu/reach](https://sites.brown.edu/reach)**.



[sites.brown.edu/reach](https://sites.brown.edu/reach)



◀ Scan this code (QR Code) to see if you may be eligible.



**BROWN**  
School of Public Health



Howard Brown  
Health